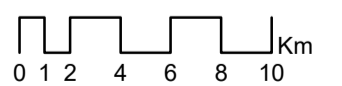


MOG II - Offshore tracéstudie

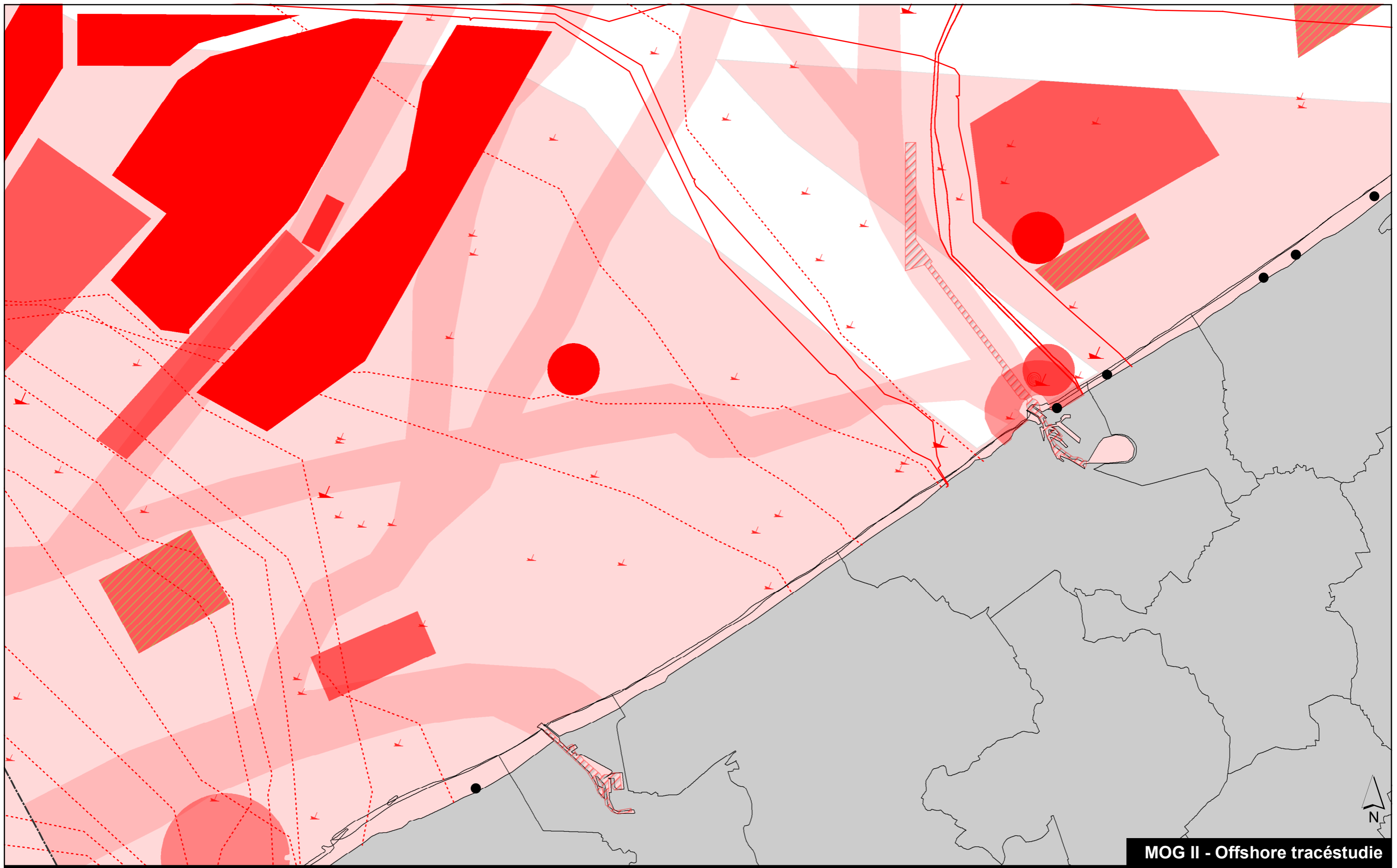
Weerstandkaart - Belgisch deel van de Noordzee

Weerstand

- Lage weerstand
- Hoge weerstand (te vermijden)





1:300.000



MOG II - Offshore tracéstudie

Weerstand

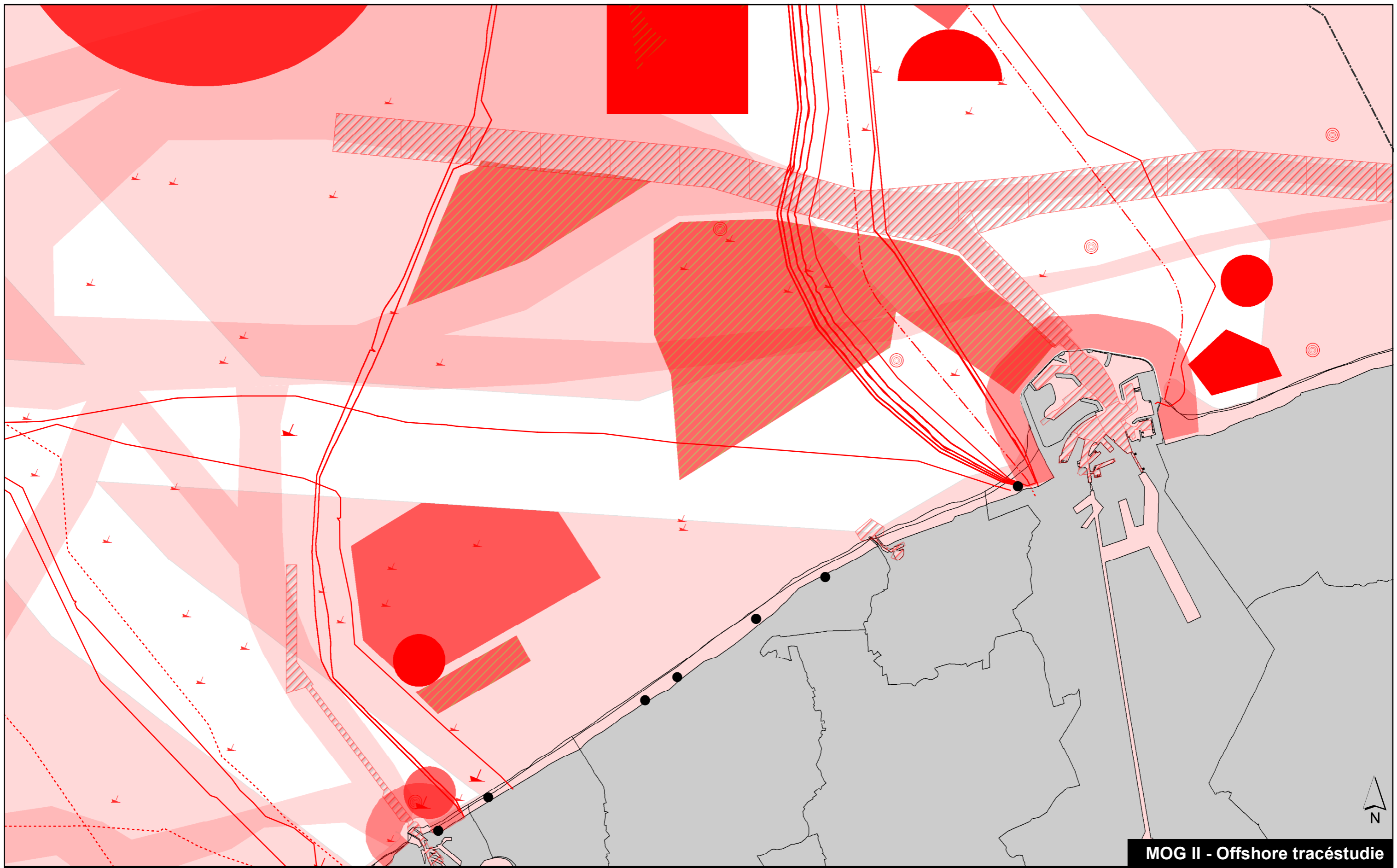
-  Lage weerstand
-  Hoge weerstand (te vermijden)



1:100.000

Weerstandkaart - Westkust





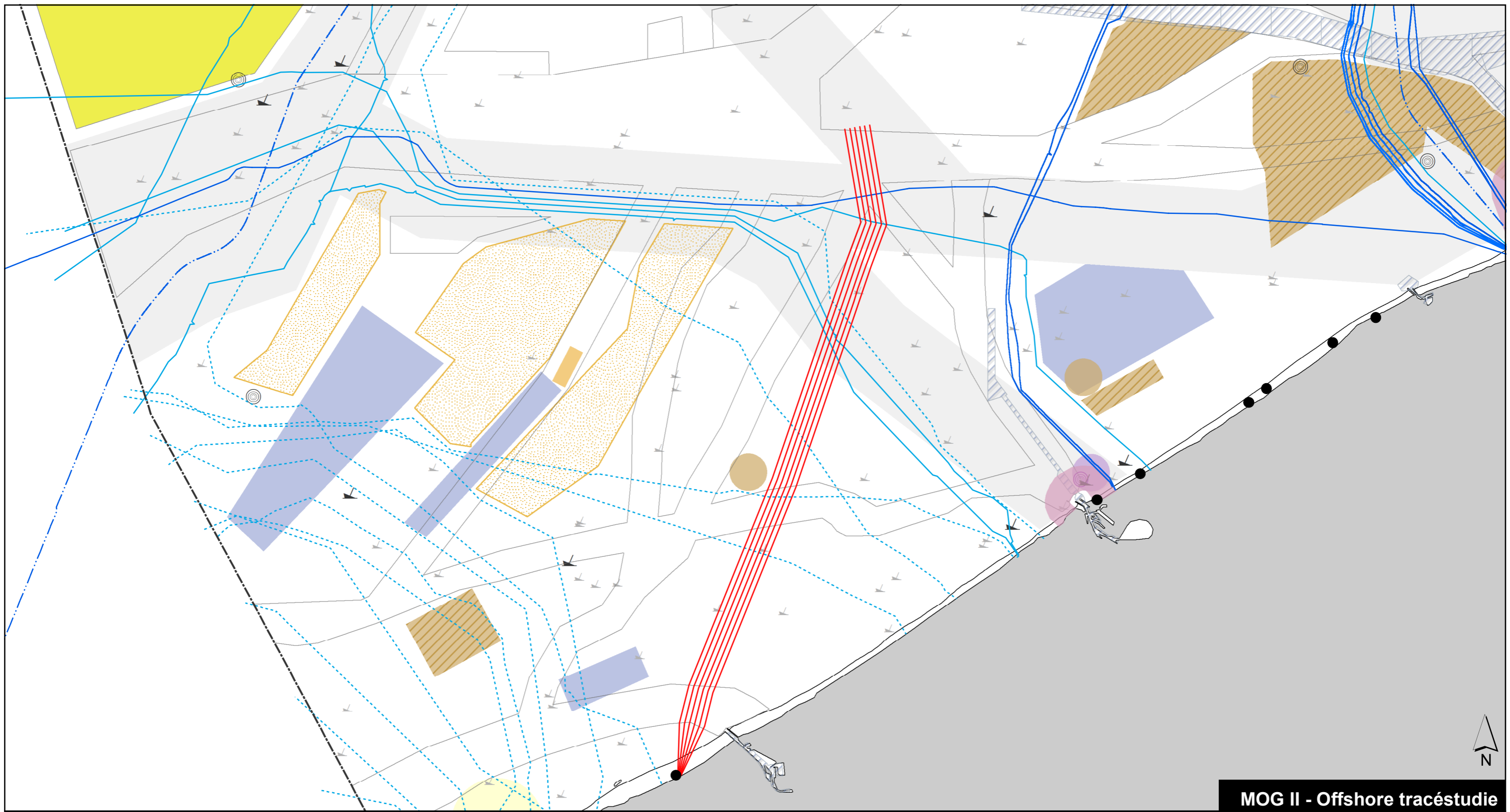
MOG II - Offshore tracéstudie

Weerstand
 Lage weerstand
 Hoge weerstand (te vermijden)



1:100.000

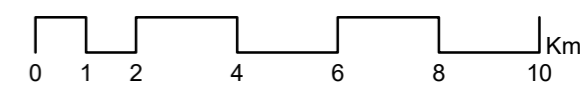
Weerstandkaart - Oostkust
ARCADIS



MOG II - Offshore tracéstudie

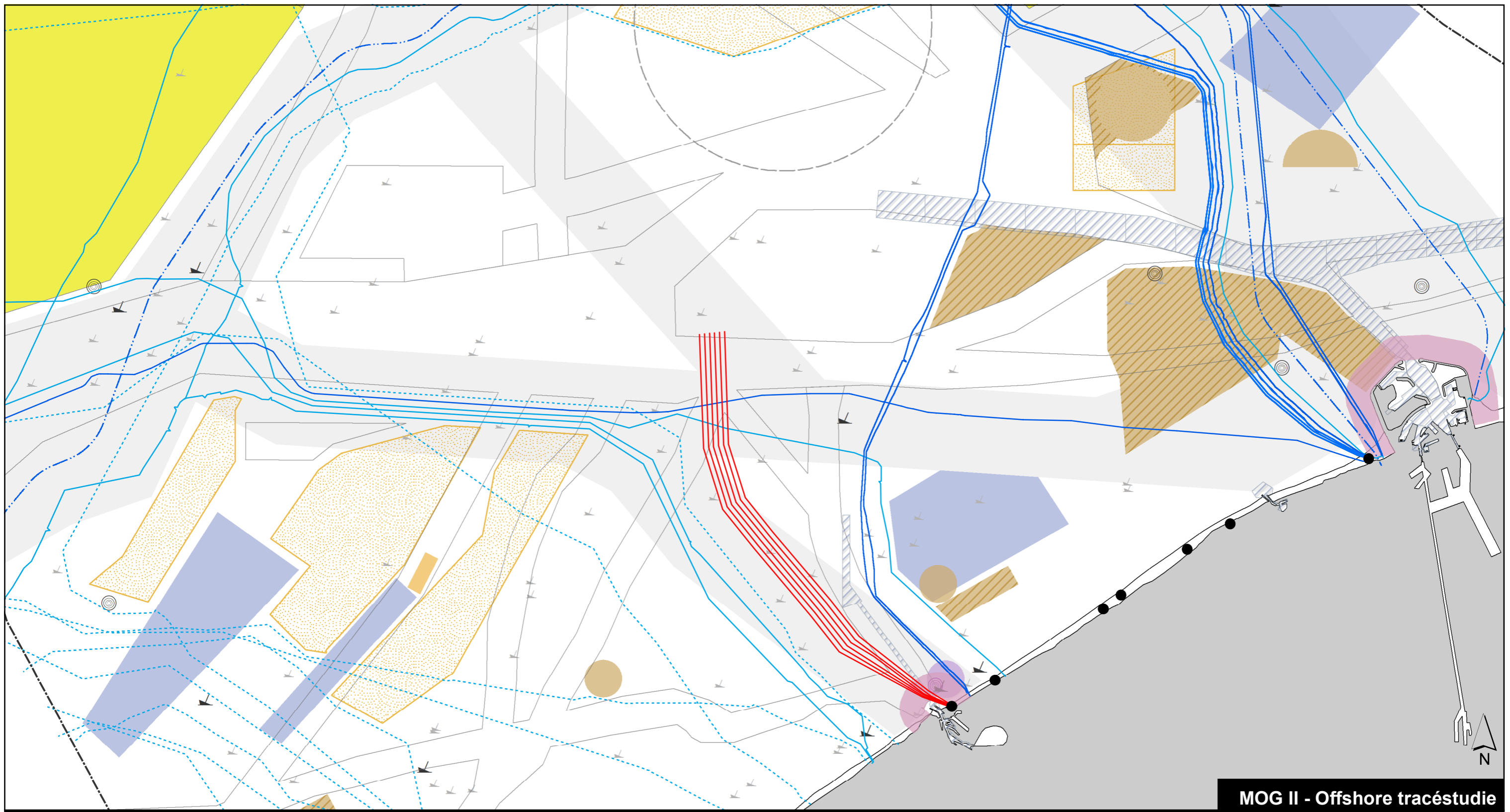
Tracéalternatieven | PART A_Koksijde 1

- | | | |
|-----------------------------------|---|---|
| — MOG II cables | ■ Area for industrial and commercial activities | ⚓ Protected wrecks |
| — Power cables | □ Shipping lanes | ⚓ Wrecks |
| --- Pipelines | ▨ Shipping lanes - Dredged areas | ● Marine innovation project location |
| ⋯ Telecom cables - Out of service | ■ Harbor extension area | ⊙ Measuring poles and radar towers |
| — Telecom cables - In service | ■ Spoil dump site | ■ Reference area calibration acoustic instruments |
| ■ Renewable energy area | ▨ Spoil dump site - Reservation site | ■ Test area sea defence |
| ■ Sand extraction area | □ Area for defusing mines | ■ Corridor for cables and pipelines |



1:150.000

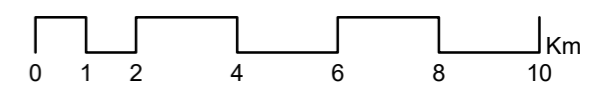




MOG II - Offshore tracéstudie

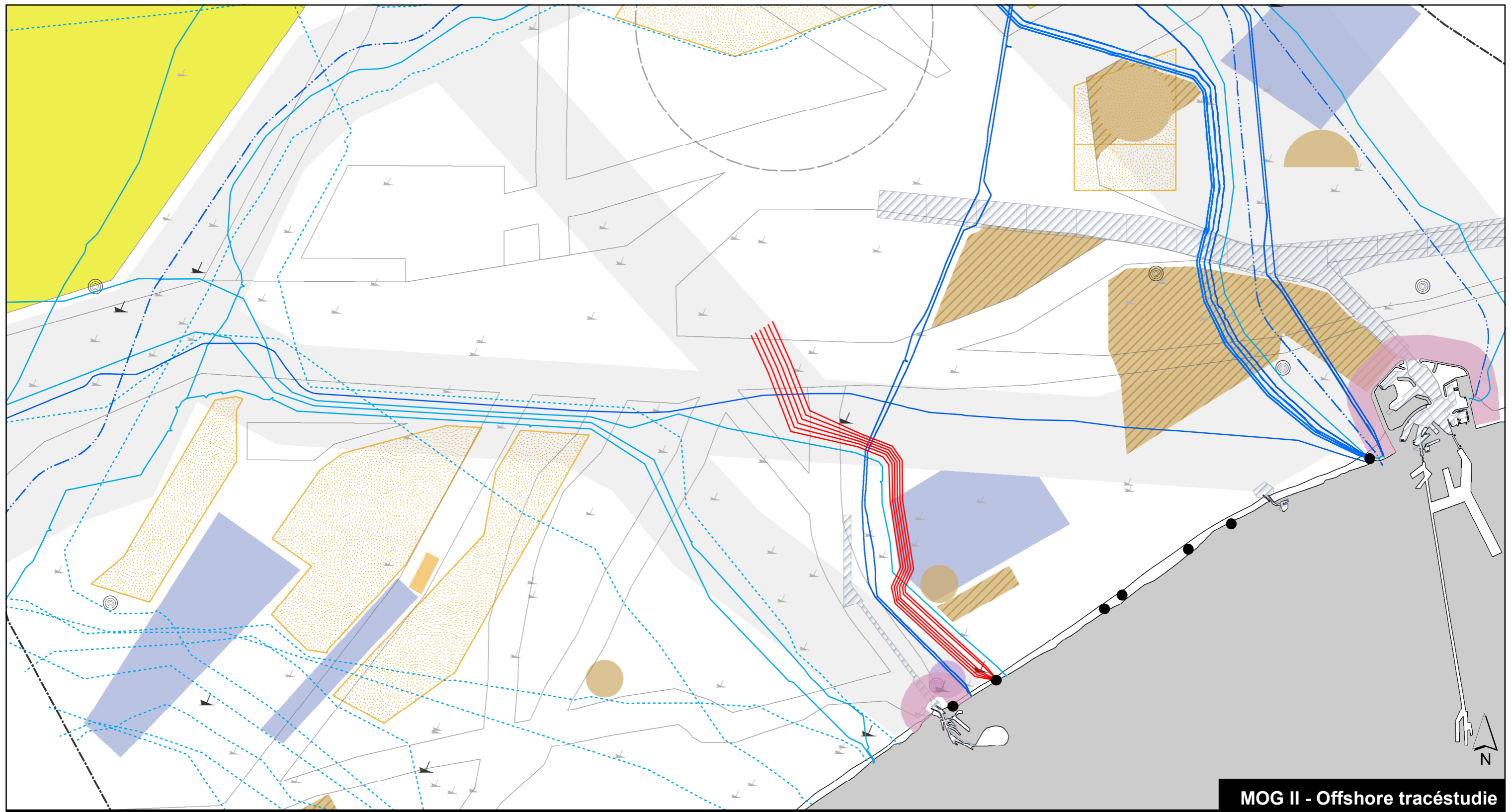
Tracéalternatieven | PART A_Oostende 1

- | | | |
|---|---|---|
| — MOG II cables | ■ Area for industrial and commercial activities | ⚓ Protected wrecks |
| — Power cables | □ Shipping lanes | ⚓ Wrecks |
| - - Pipelines | ▨ Shipping lanes - Dredged areas | ● Marine innovation project location |
| - · - · Telecom cables - Out of service | ■ Harbor extension area | ⊙ Measuring poles and radar towers |
| — Telecom cables - In service | ■ Spoil dump site | ■ Reference area calibration acoustic instruments |
| ■ Renewable energy area | ▨ Spoil dump site - Reservation site | ■ Test area sea defence |
| ▨ Sand extraction area | □ Area for defusing mines | ■ Corridor for cables and pipelines |



1:150.000

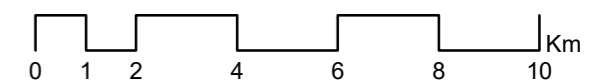




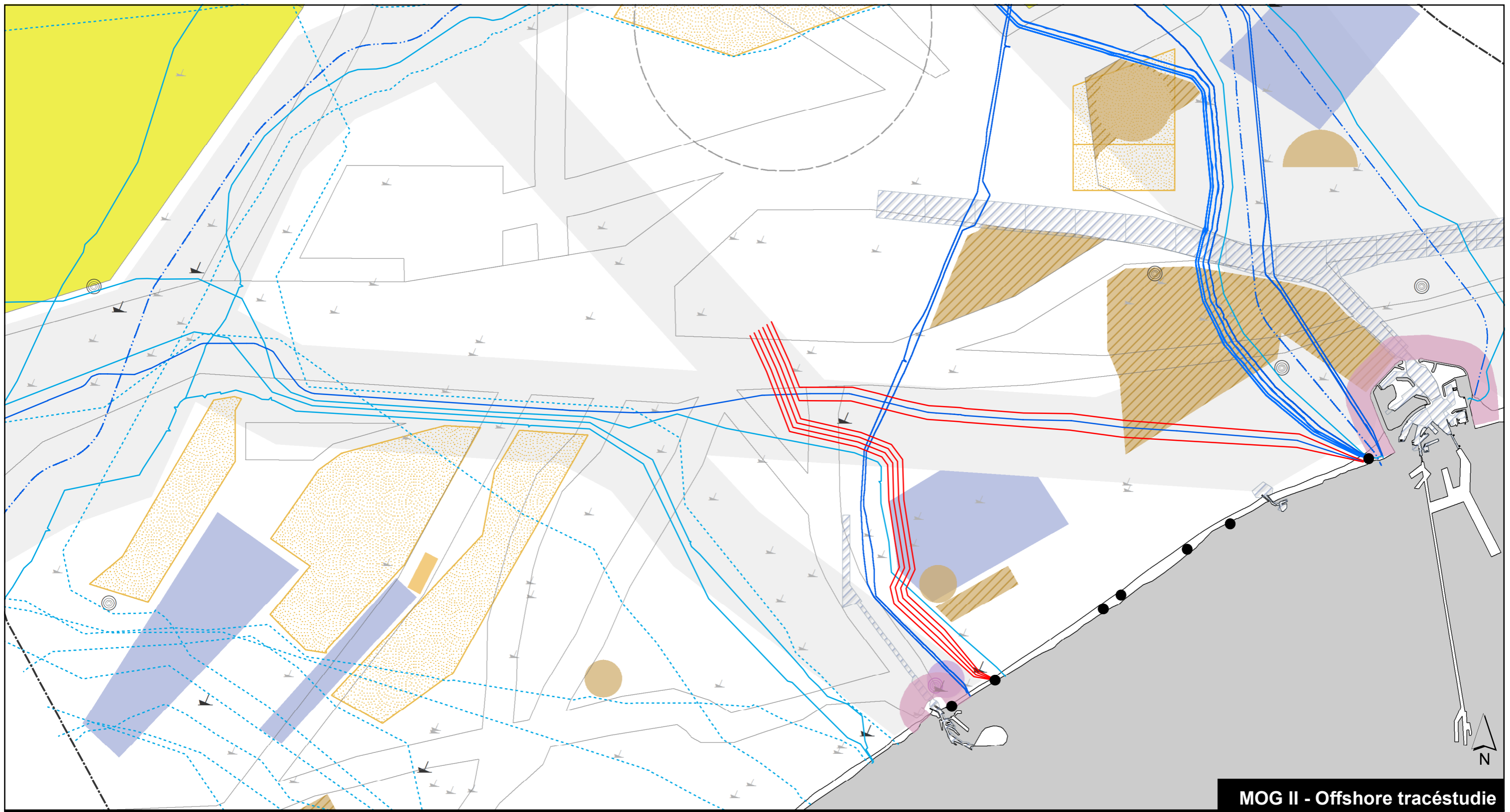
MOG II - Offshore tracéstudie

Tracéalternatieven | PART A_Bredene 1

- | | | |
|---|---|---|
| — MOG II cables | ■ Area for industrial and commercial activities | ⚓ Protected wrecks |
| — Power cables | □ Shipping lanes | ⚓ Wrecks |
| - - Pipelines | ▨ Shipping lanes - Dredged areas | ● Marine innovation project location |
| - · - · Telecom cables - Out of service | ■ Harbor extension area | ⊙ Measuring poles and radar towers |
| — Telecom cables - In service | ■ Spoil dump site | ■ Reference area calibration acoustic instruments |
| ■ Renewable energy area | ■ Spoil dump site - Reservation site | ■ Test area sea defence |
| ■ Sand extraction area | □ Area for defusing mines | ■ Corridor for cables and pipelines |



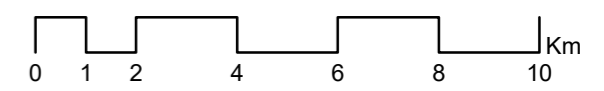
1:150.000



MOG II - Offshore tracéstudie

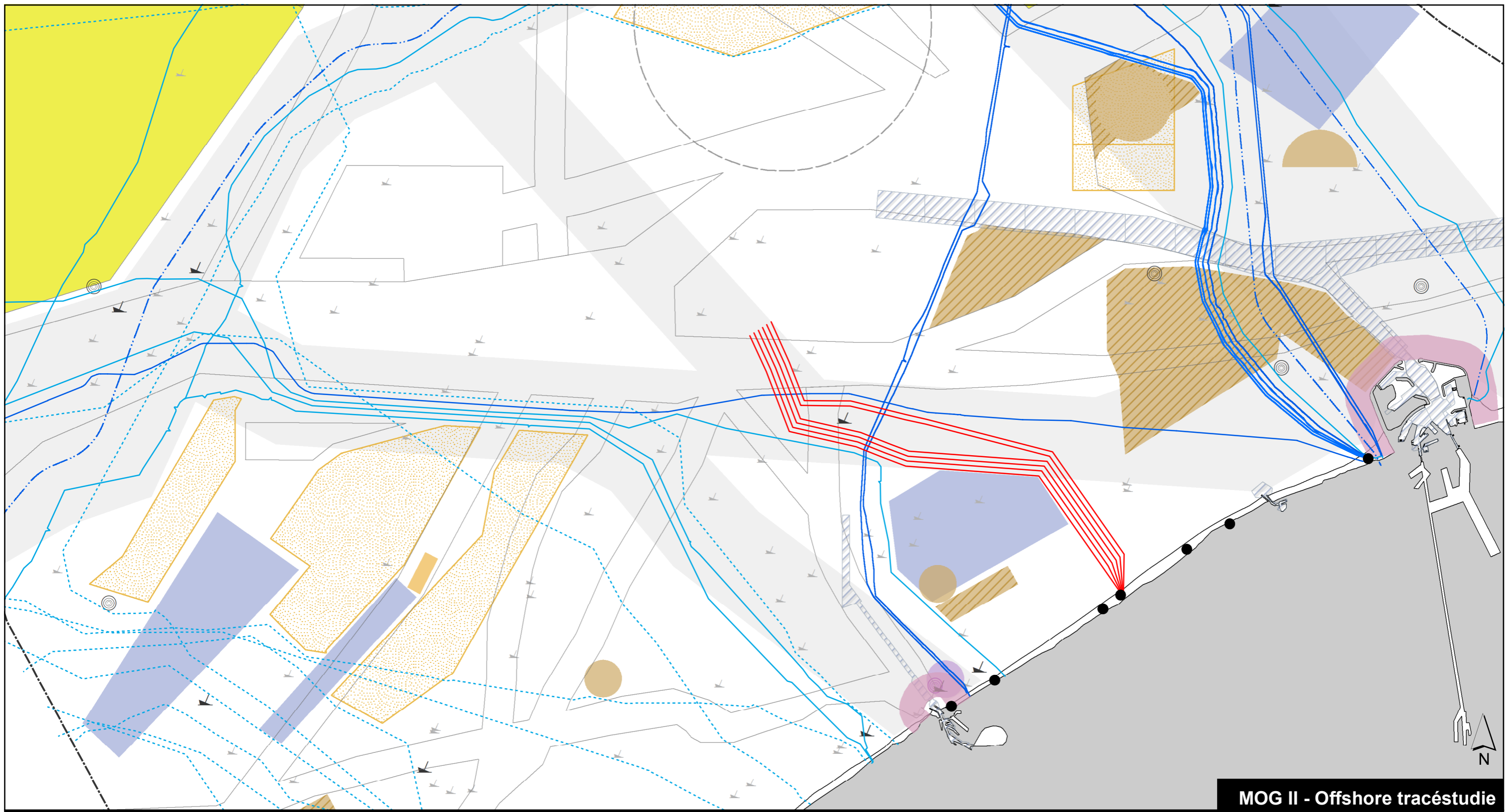
Tracéalternatieven | PART A_Bredene 2

- | | | |
|---|---|---|
| — MOG II cables | ■ Area for industrial and commercial activities | ⚓ Protected wrecks |
| — Power cables | □ Shipping lanes | ⚓ Wrecks |
| - - Pipelines | ▨ Shipping lanes - Dredged areas | ● Marine innovation project location |
| - · - · Telecom cables - Out of service | ■ Harbor extension area | ⊙ Measuring poles and radar towers |
| — Telecom cables - In service | ■ Spoil dump site | ■ Reference area calibration acoustic instruments |
| ■ Renewable energy area | ■ Spoil dump site - Reservation site | ■ Test area sea defence |
| ■ Sand extraction area | □ Area for defusing mines | ■ Corridor for cables and pipelines |



1:150.000

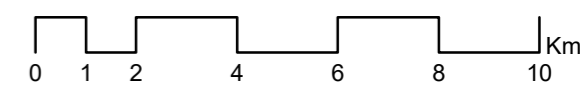




MOG II - Offshore tracéstudie

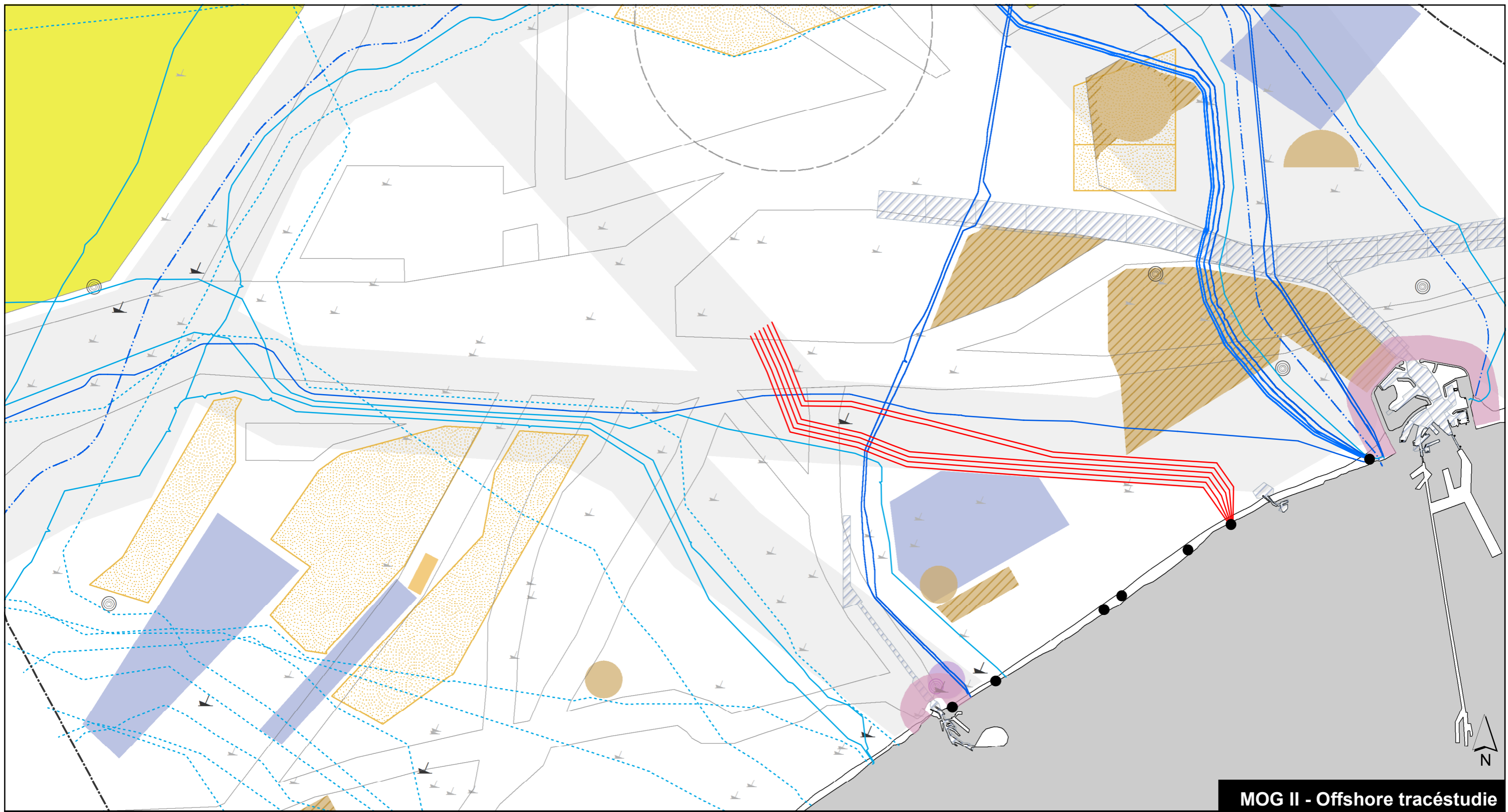
Tracéalternatieven | PART A_De Haan 1

- | | | |
|---|---|---|
| — MOG II cables | ■ Area for industrial and commercial activities | ⚓ Protected wrecks |
| — Power cables | □ Shipping lanes | ⚓ Wrecks |
| - - Pipelines | ▨ Shipping lanes - Dredged areas | ● Marine innovation project location |
| - · - · Telecom cables - Out of service | ■ Harbor extension area | ⊙ Measuring poles and radar towers |
| — Telecom cables - In service | ■ Spoil dump site | ■ Reference area calibration acoustic instruments |
| ■ Renewable energy area | ▨ Spoil dump site - Reservation site | ■ Test area sea defence |
| ▨ Sand extraction area | □ Area for defusing mines | ■ Corridor for cables and pipelines |



1:150.000

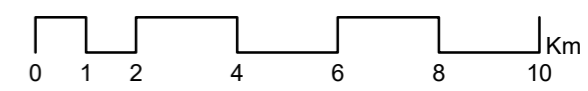




MOG II - Offshore tracéstudie

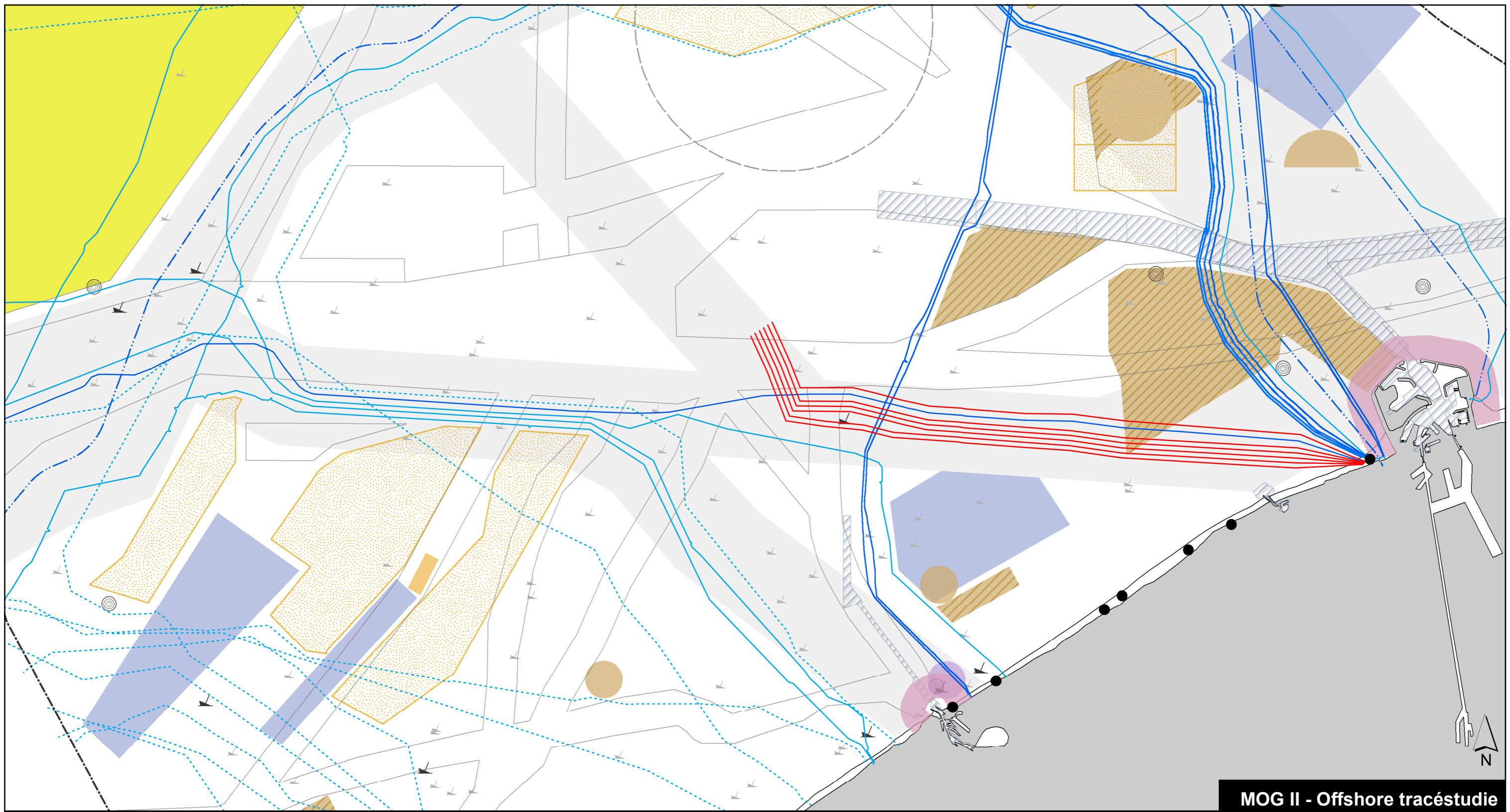
Tracéalternatieven | PART A_Wenduine oost 1

- | | | |
|---|---|---|
| — MOG II cables | ■ Area for industrial and commercial activities | ⚓ Protected wrecks |
| — Power cables | □ Shipping lanes | ⚓ Wrecks |
| - - Pipelines | ▨ Shipping lanes - Dredged areas | ● Marine innovation project location |
| - · - · Telecom cables - Out of service | ■ Harbor extension area | ⊙ Measuring poles and radar towers |
| — Telecom cables - In service | ■ Spoil dump site | ■ Reference area calibration acoustic instruments |
| ■ Renewable energy area | ▨ Spoil dump site - Reservation site | ■ Test area sea defence |
| ▨ Sand extraction area | □ Area for defusing mines | ■ Corridor for cables and pipelines |

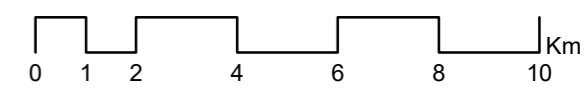


1:150.000



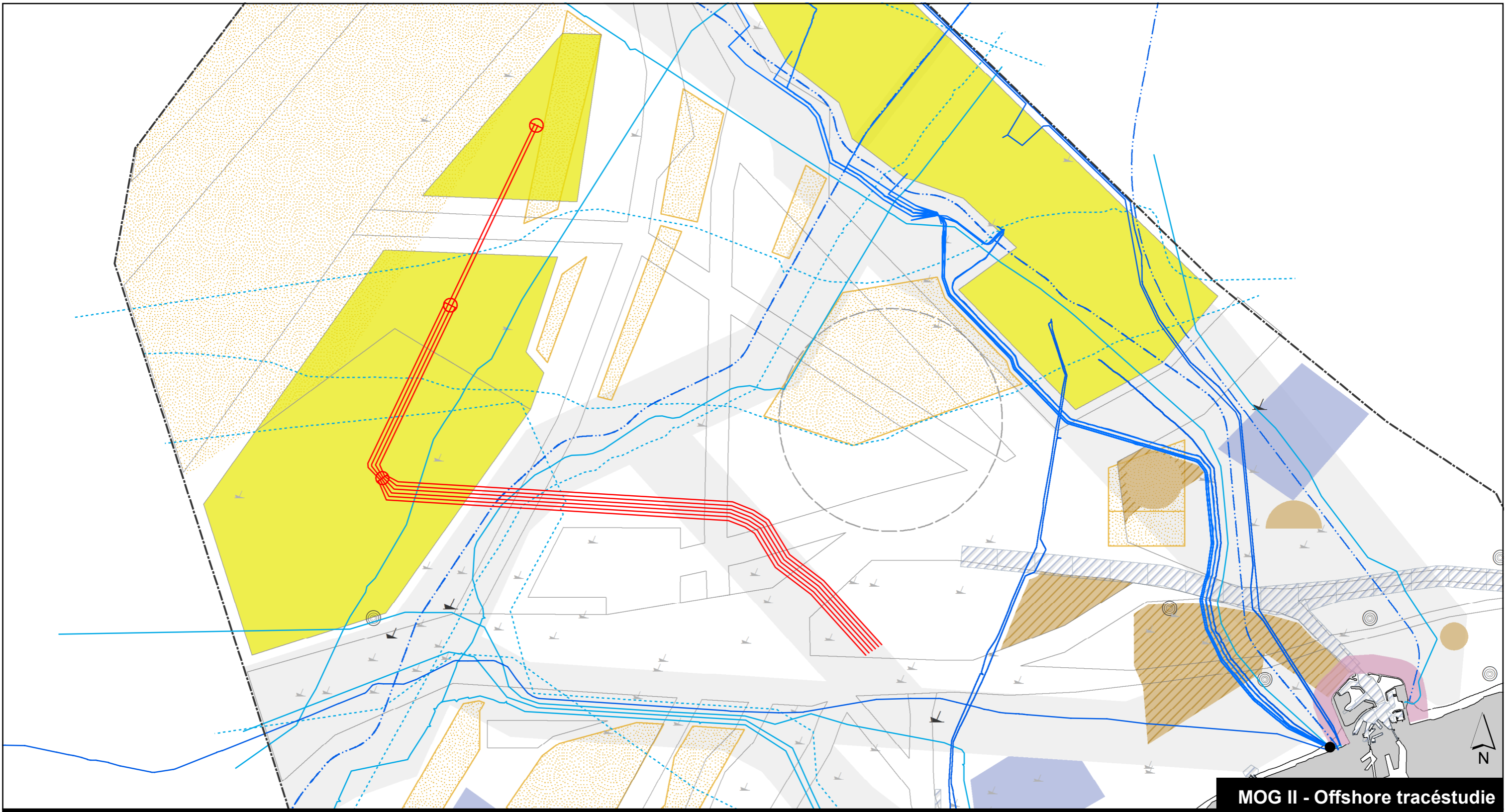


- | | | |
|---|---|---|
| — MOG II cables | ■ Area for industrial and commercial activities | ⚓ Protected wrecks |
| — Power cables | □ Shipping lanes | ⚓ Wrecks |
| - - Pipelines | ▨ Shipping lanes - Dredged areas | ● Marine innovation project location |
| - · - · Telecom cables - Out of service | ■ Harbor extension area | ⊙ Measuring poles and radar towers |
| — Telecom cables - In service | ■ Spoil dump site | ■ Reference area calibration acoustic instruments |
| ■ Renewable energy area | ▨ Spoil dump site - Reservation site | ■ Test area sea defence |
| ▨ Sand extraction area | □ Area for defusing mines | ■ Corridor for cables and pipelines |



1:150.000

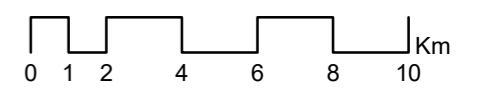




MOG II - Offshore tracéstudie

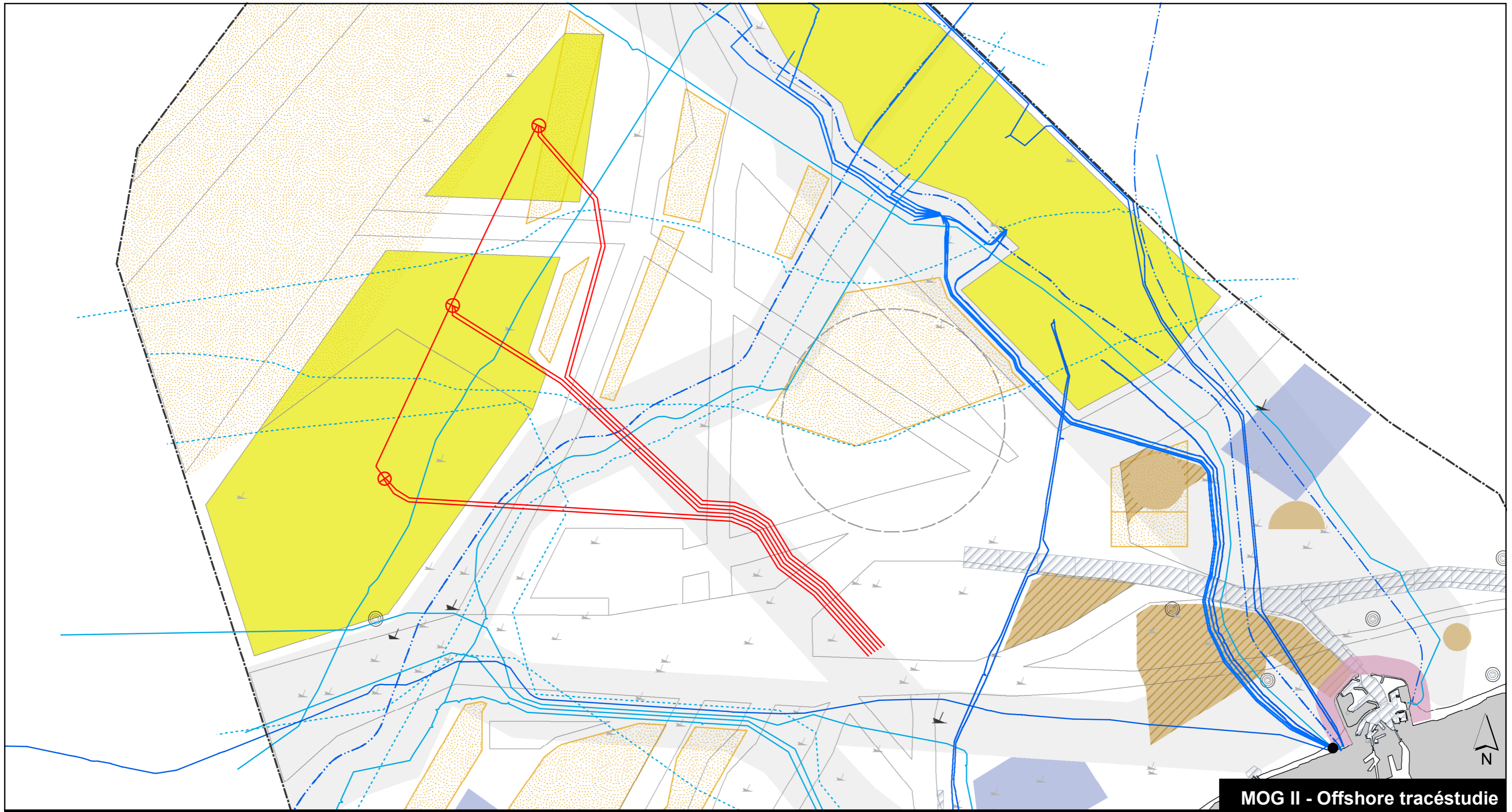
Tracéalternatieven | PART B_1

- | | | |
|---|---|---|
| — MOG II cables | ■ Area for industrial and commercial activities | ⚓ Protected wrecks |
| — Power cables | □ Shipping lanes | ⚓ Wrecks |
| - - Pipelines | ▨ Shipping lanes - Dredged areas | ■ Marine innovation project location |
| - · - · Telecom cables - Out of service | ■ Harbor extension area | ⊙ Measuring poles and radar towers |
| — Telecom cables - In service | ■ Spoil dump site | ■ Reference area calibration acoustic instruments |
| ■ Renewable energy area | ▨ Spoil dump site - Reservation site | ■ Test area sea defence |
| ■ Sand extraction area | □ Area for defusing mines | ■ Corridor for cables and pipelines |



1:200.000

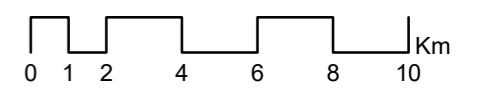




MOG II - Offshore tracéstudie

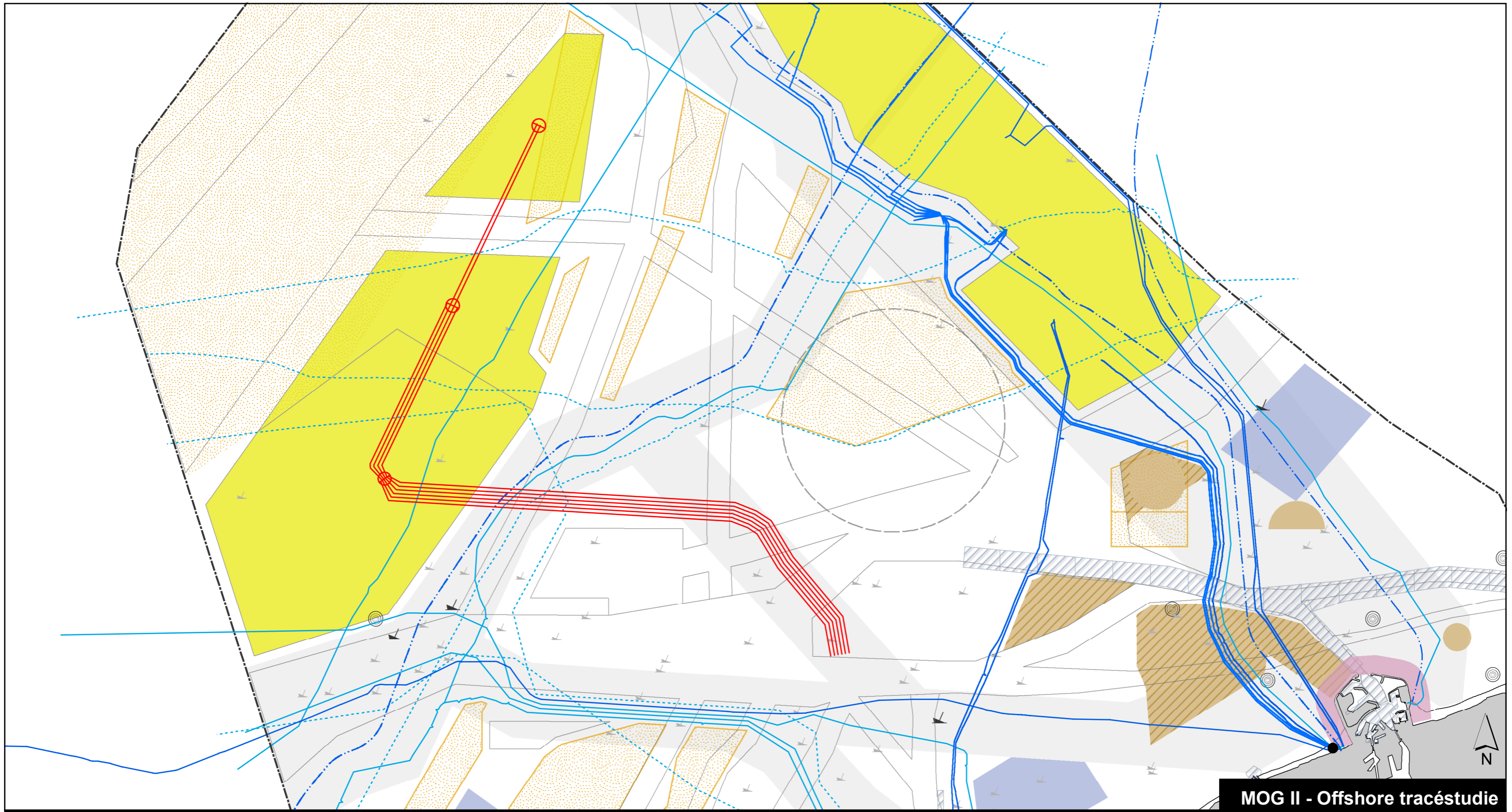
Tracéalternatieven | PART B_2

- | | | |
|---|---|---|
| — MOG II cables | ■ Area for industrial and commercial activities | ▲ Protected wrecks |
| — Power cables | □ Shipping lanes | ▲ Wrecks |
| - - Pipelines | ▨ Shipping lanes - Dredged areas | ■ Marine innovation project location |
| - · - · Telecom cables - Out of service | ■ Harbor extension area | ◎ Measuring poles and radar towers |
| — Telecom cables - In service | ■ Spoil dump site | ■ Reference area calibration acoustic instruments |
| ■ Renewable energy area | ■ Spoil dump site - Reservation site | ■ Test area sea defence |
| ■ Sand extraction area | □ Area for defusing mines | ■ Corridor for cables and pipelines |



1:200.000

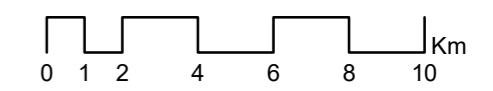




MOG II - Offshore tracéstudie

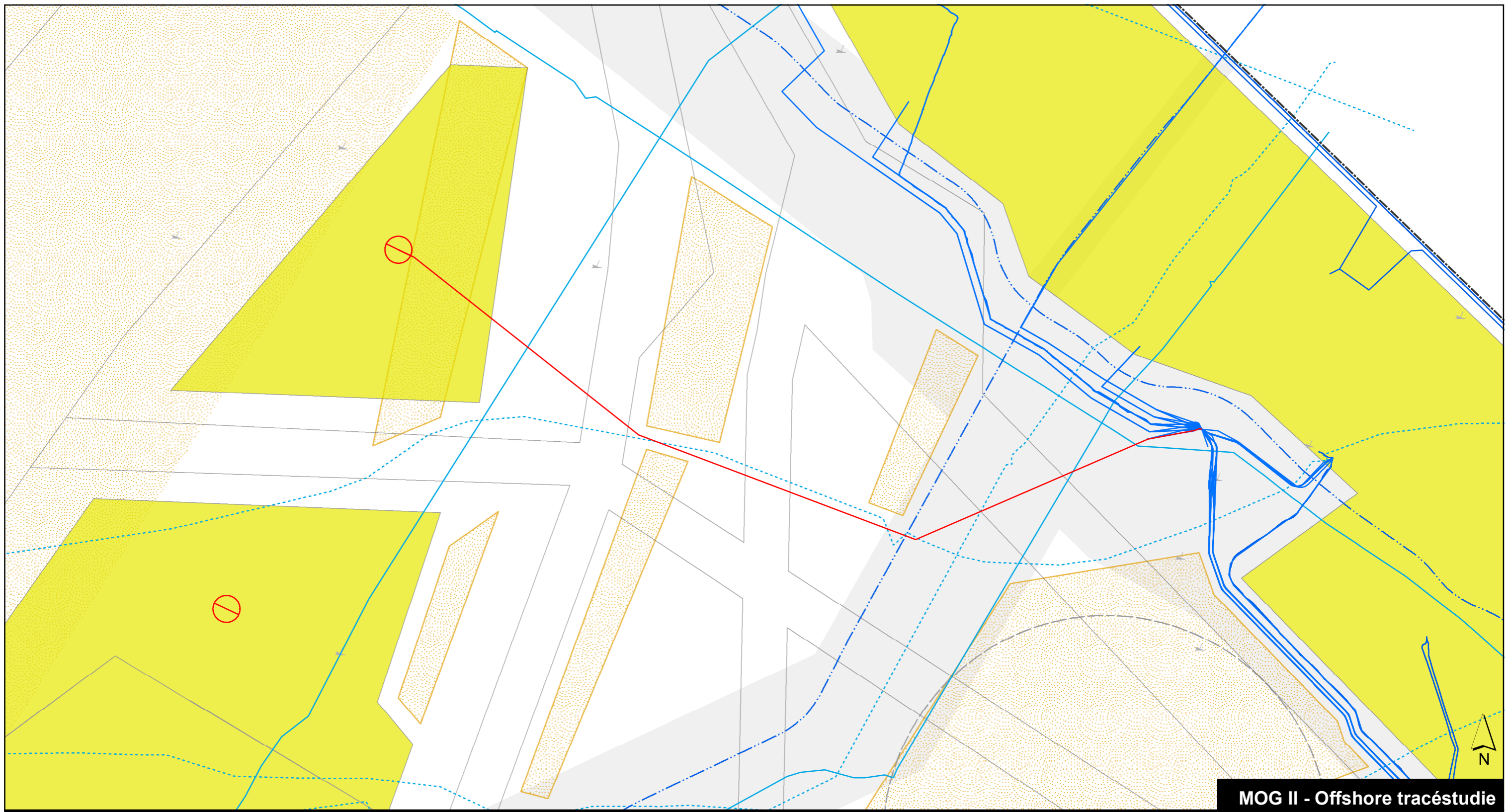
Tracéalternatieven | PART B_3

- | | | |
|---|---|---|
| — MOG II cables | ■ Area for industrial and commercial activities | ▲ Protected wrecks |
| — Power cables | □ Shipping lanes | ▲ Wrecks |
| - - Pipelines | ▨ Shipping lanes - Dredged areas | ■ Marine innovation project location |
| - · - · Telecom cables - Out of service | ■ Harbor extension area | ◎ Measuring poles and radar towers |
| — Telecom cables - In service | ■ Spoil dump site | ■ Reference area calibration acoustic instruments |
| ■ Renewable energy area | ▨ Spoil dump site - Reservation site | ■ Test area sea defence |
| ■ Sand extraction area | □ Area for defusing mines | ■ Corridor for cables and pipelines |



1:200.000

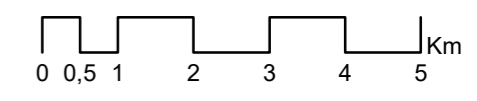




MOG II - Offshore tracéstudie

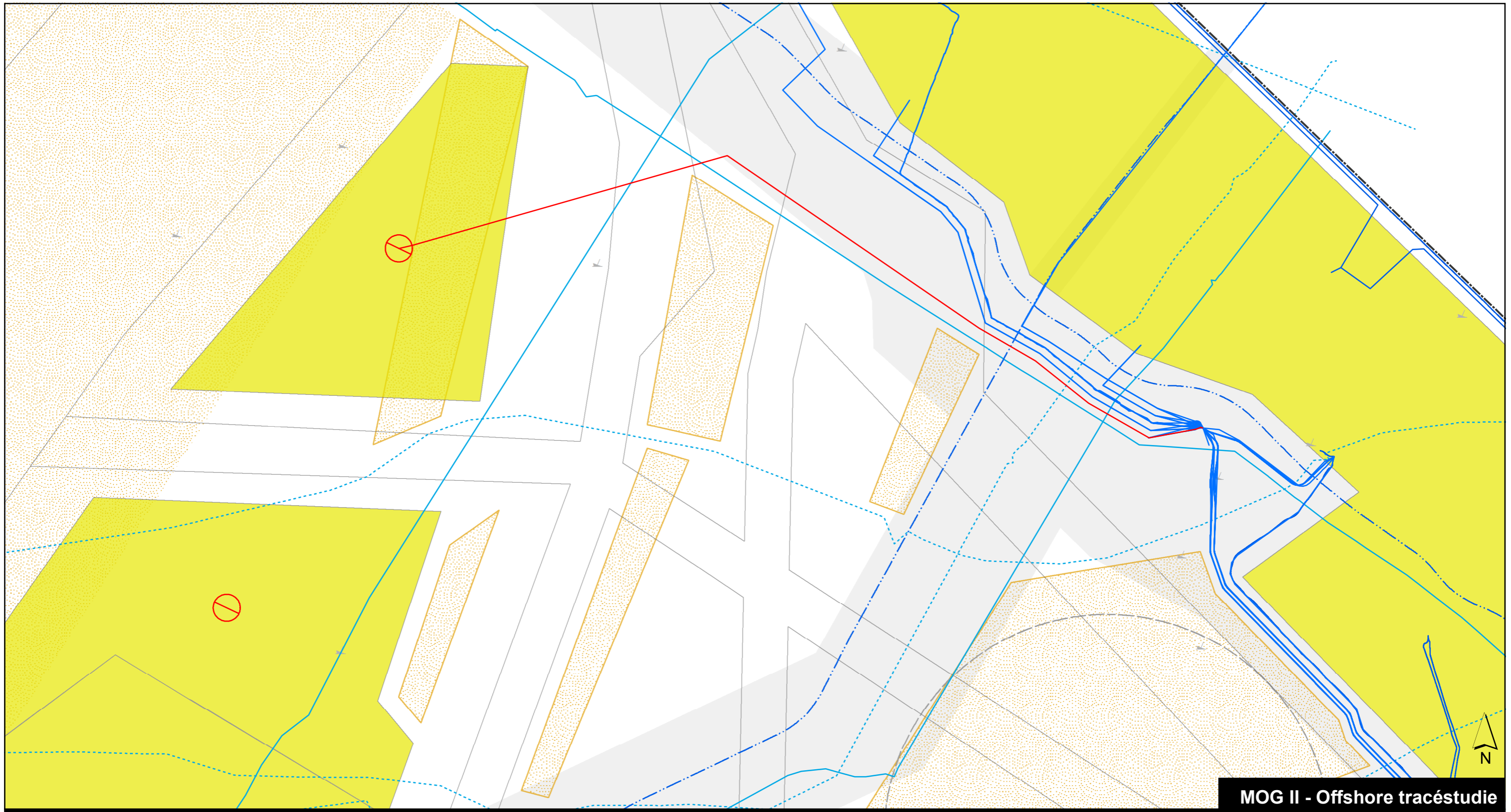
Tracéalternatieven | PART C_1

- | | | |
|-----------------------------------|---|---|
| — MOG II cables | ■ Area for industrial and commercial activities | ⚓ Protected wrecks |
| — Power cables | □ Shipping lanes | ⚓ Wrecks |
| - - Pipelines | ▨ Shipping lanes - Dredged areas | ■ Marine innovation project location |
| ⋯ Telecom cables - Out of service | ■ Harbor extension area | ⊙ Measuring poles and radar towers |
| — Telecom cables - In service | ■ Spoil dump site | ■ Reference area calibration acoustic instruments |
| ■ Renewable energy area | ■ Spoil dump site - Reservation site | ■ Test area sea defence |
| ■ Sand extraction area | □ Area for defusing mines | ■ Corridor for cables and pipelines |



1:100.000

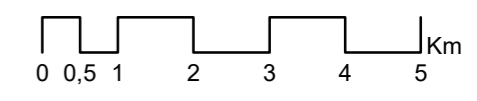




MOG II - Offshore tracéstudie

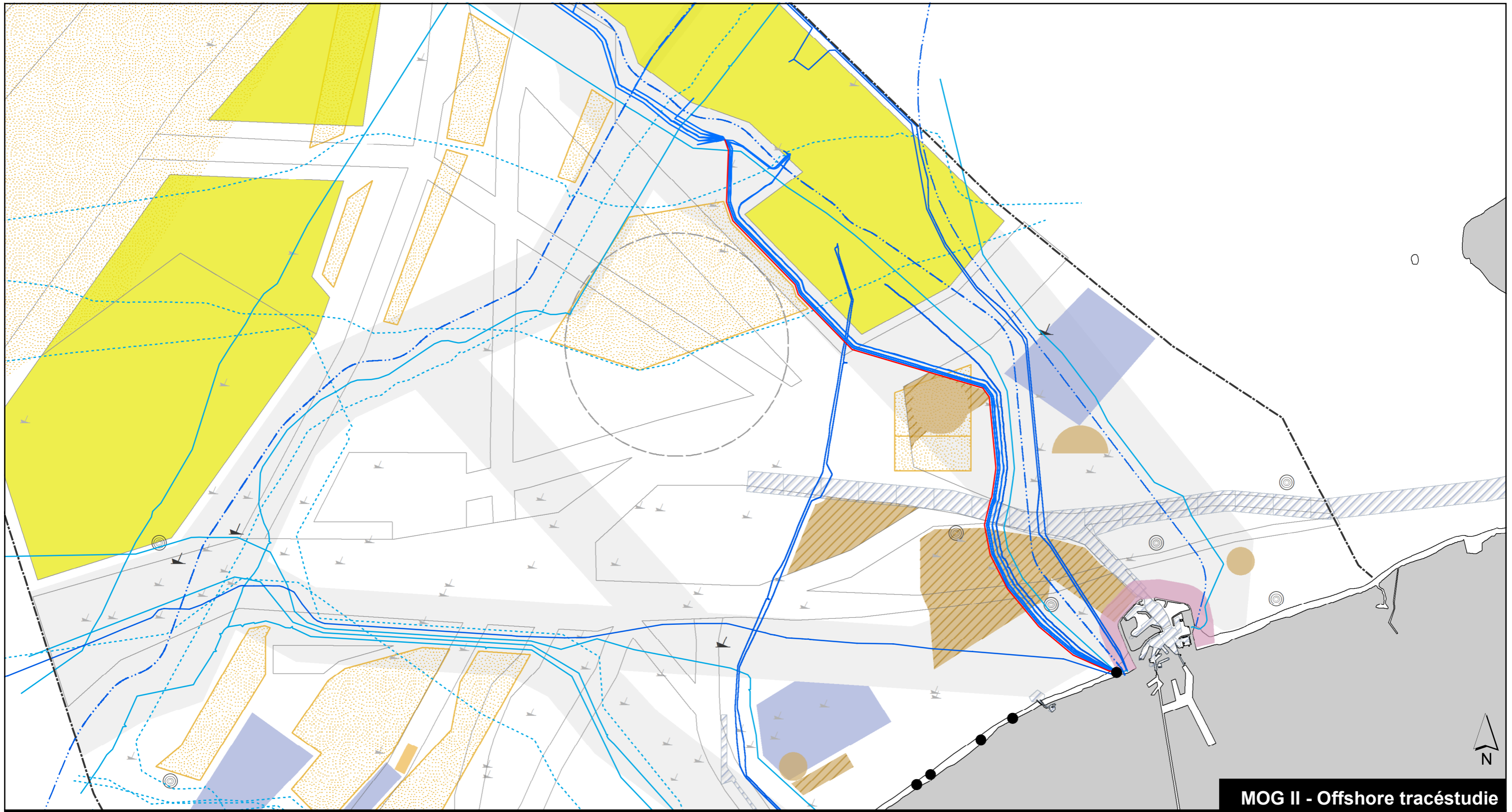
Tracéalternatieven | PART C_2

- | | | |
|---|---|---|
| — MOG II cables | ■ Area for industrial and commercial activities | ⚓ Protected wrecks |
| — Power cables | □ Shipping lanes | ⚓ Wrecks |
| - - Pipelines | ▨ Shipping lanes - Dredged areas | ■ Marine innovation project location |
| - · - · Telecom cables - Out of service | ■ Harbor extension area | ⊙ Measuring poles and radar towers |
| — Telecom cables - In service | ■ Spoil dump site | ■ Reference area calibration acoustic instruments |
| ■ Renewable energy area | ▨ Spoil dump site - Reservation site | ■ Test area sea defence |
| ▨ Sand extraction area | □ Area for defusing mines | ■ Corridor for cables and pipelines |



1:100.000

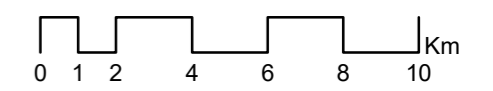




MOG II - Offshore tracéstudie

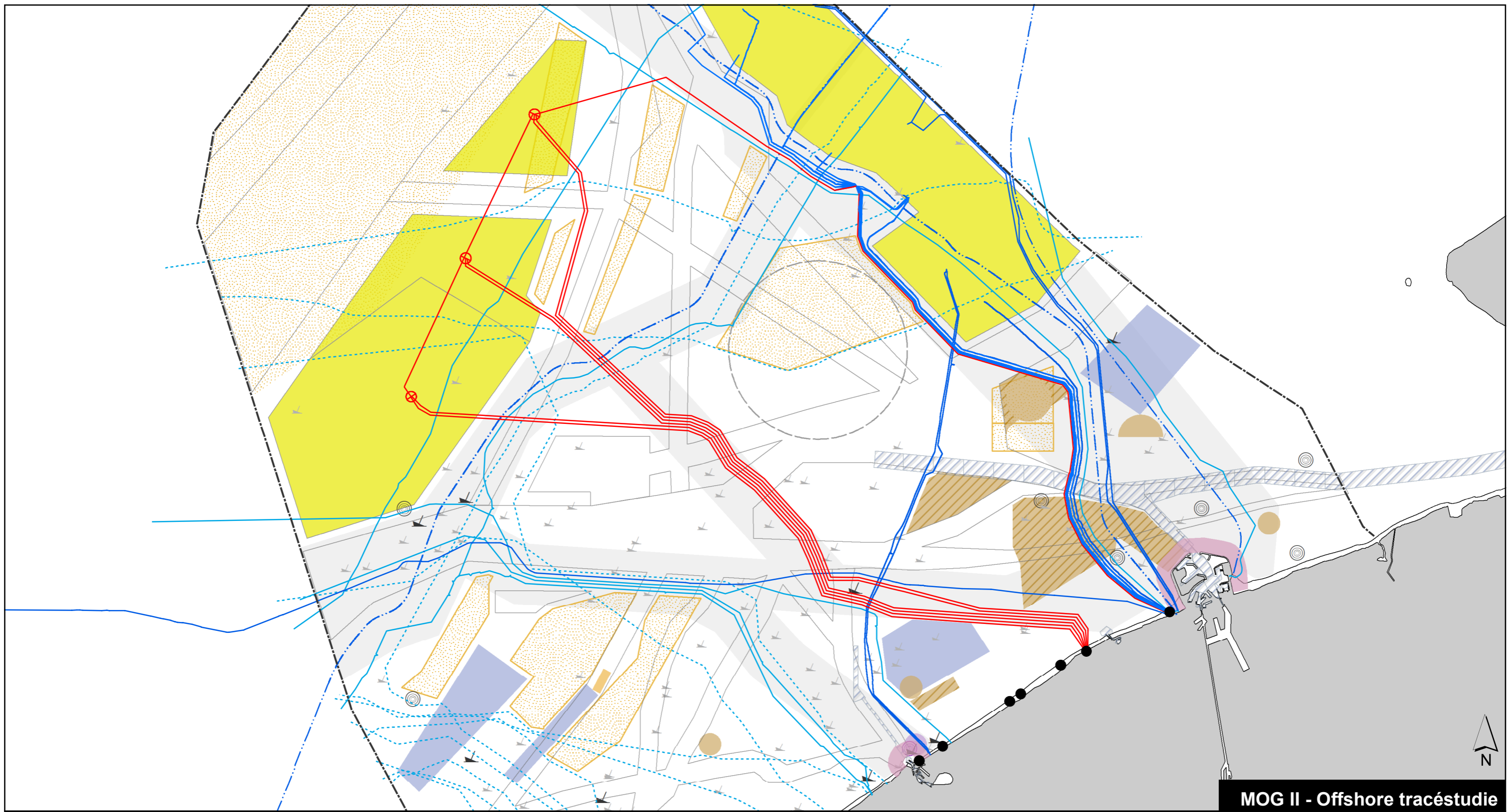
Tracéalternatieven | PART D

- | | | |
|-------------------------------------|---|---|
| — MOG II cables | ■ Area for industrial and commercial activities | ⚓ Protected wrecks |
| — Power cables | □ Shipping lanes | ⚓ Wrecks |
| --- Pipelines | ▨ Shipping lanes - Dredged areas | ■ Marine innovation project location |
| --- Telecom cables - Out of service | ■ Harbor extension area | ⊙ Measuring poles and radar towers |
| — Telecom cables - In service | ■ Spoil dump site | ■ Reference area calibration acoustic instruments |
| ■ Renewable energy area | ▨ Spoil dump site - Reservation site | ■ Test area sea defence |
| ■ Sand extraction area | □ Area for defusing mines | ■ Corridor for cables and pipelines |



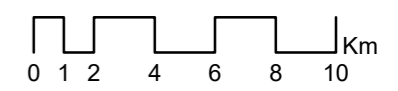
1:200.000



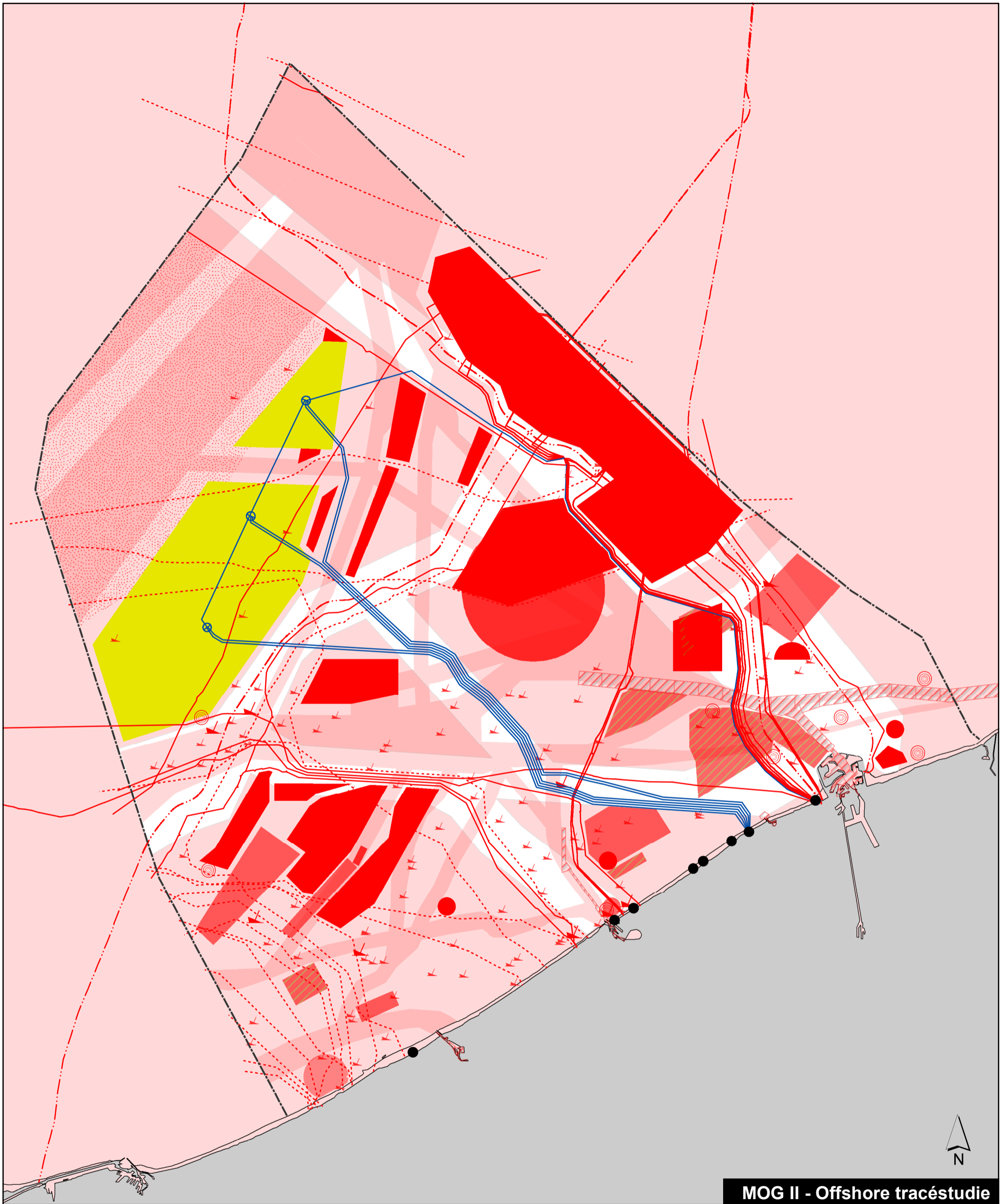


Tracéalternatieven | Voorbeeld gecombineerde delen
(PART A_Wenduine Oost_1 + PART B_2 + PART C_2 + PART D)

- | | | |
|---|---|---|
| — MOG II cables | ■ Area for industrial and commercial activities | ▲ Protected wrecks |
| — Power cables | □ Shipping lanes | ▲ Wrecks |
| - - Pipelines | ▨ Shipping lanes - Dredged areas | ■ Marine innovation project location |
| - · - · Telecom cables - Out of service | ■ Harbor extension area | ⊙ Measuring poles and radar towers |
| — Telecom cables - In service | ■ Spoil dump site | ■ Reference area calibration acoustic instruments |
| ■ Renewable energy area | ■ Spoil dump site - Reservation site | ■ Test area sea defence |
| ■ Sand extraction area | □ Area for defusing mines | ■ Corridor for cables and pipelines |

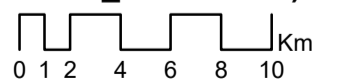


1:250.000



MOG II - Offshore tracéstudie

Voorbeeld gecombineerde delen
(PART A_Wenduine Oost_1 + PART B_2 + PART C_2 + PART D)



1:300.000

Weerstand

- Lage weerstand
- Hoge weerstand (te vermijden)